

ANATECH

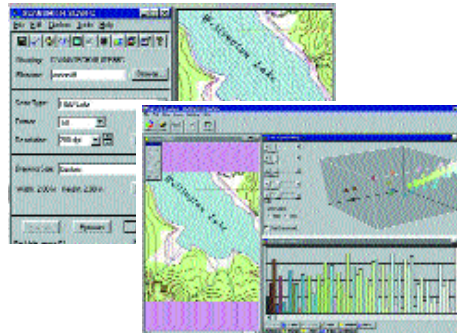
Eagle Colour Series

Exceptionally Accurate, High Resolution Colour Solutions for GIS, Mapping, CAD and other Demanding Applications

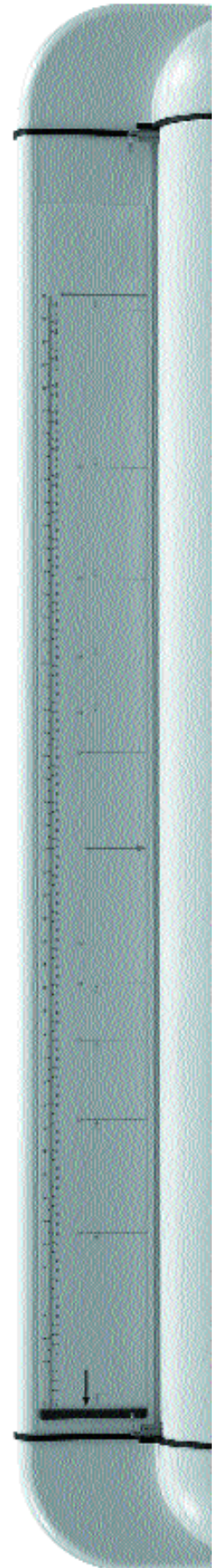
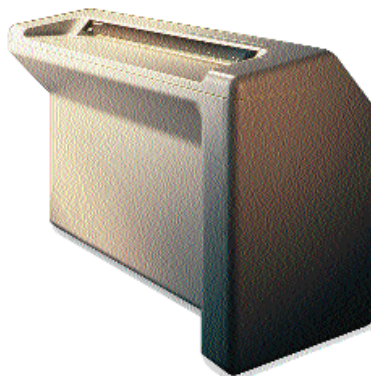
ANatech Eagle Colour scanners are designed for the most demanding colour applications where accuracy and resolution are essential for capturing fine image detail and critical colour features successfully. The extremely accurate first generation scans produced are capable of being imported directly into production workflows with minimal post-scan editing, saving you precious time and money.

- Typical applications can include digital proofing and re-digitising of half tone screened data where high resolution (up to 800 dpi optical) is critical to capture the very small printed dots and maintain their size.
- GIS customers rely on the Eagle's un-matched geometric accuracy (0.05%) and resolution to produce raster files for direct input, with no need for expensive geo-referencing processes, such as rubber sheeting or warping.
- Eagle scanners include CLASS colour classification software. This has highly developed colour indexing & feature extraction algorithms for identifying and colour separating features of interest, such as property & zoning boundaries, contour lines and other natural edge features, rivers etc.
- The high optical resolution of the Eagle is made possible by its patented three point optical mounting and single, large diameter roller media transport system. This critical design feature delivers exceptional geometric accuracy of 0.05% by eliminating the effects of environmental changes, external vibration and resonance.

SOPHISTICATED USER INTERFACE



- Full scanner set-up and control plus added workflow features.
- Thumbnail and zoom views. Post scan editing.
- Batch scanning with automatic file numbering.
- Document clean-up and archiving.
- TWAIN industry standard interface.





ANATECH

Eagle Series

OUR BUSINESS IS YOUR IMAGE

ANatech Eagle 3640C/4240C/4080C/6250C - Technical Specifications

	3640C	4240C	4080C	6250C
Scan Time (secs)*				
~ colour	72s	96s	334s	301s
~ greyscale	72s	96s	334s	301s
~ mono	72s	96s	334s	301s
Resolution (dpi)				
~ variable	1-400	1-400	1-800	1-500
~ optical	400	400	800	500
Active Scan Width x unlimited length	36", 91cm	42", 107cm	40", 102cm	62", 158cm
Maximum Document Width	44", 112cm	44", 112cm	44", 112cm	64", 163cm
Imaging Technology	3 cams. 4 cams. 7 cams. All models use tri-linear CCD's of 5,000 pixels width Straight line image path with no scan glass 24-bit digital data capture Patented 3-Point chassis mounting with isolated optics			7 cams.
Scan Accuracy	0.05% plus a digitising rounding error of +/- 1 pixel			
Media Handling	Media up to 0.1", 2.54mm thick Patented, single large diameter roller			
Document Type	Opaque or Translucent			
Illumination	Cold cathode tube			
Colour & Image Processing	Gamma adjustment Downloadable indexed colour palettes			
Monochrome Thresholding	2D Large Aperture Thresholding DSP			
Output Modes	24-bit RGB Colour, 256 & 16 Colour optimised palette 256 level Greyscale, Black & White			
Interface	SCSI 2			
Equipment ~ dimensions	3640C / 4240C / 4080C 40" H x 58" W x 26" D 102cm x 148cm x 66cm 600Lbs, 273Kgs			6250C 40" H x 78" W x 26" D 102cm x 198cm x 66cm 750Lbs, 340Kgs
~ weight				
~ operating environment	65 ~ 85F, 18 ~ 30C, 15 ~ 90% RH, non-condensing			
~ power requirements	100 ~ 240 VAC autosensing, 47 ~ 63 Hz			
Eagle Scanners Include	ScanSmith Productivity Suite, TWAIN (PC & MAC) micro SCSI cable, SCSI terminator, User documentation			
Options Software	Preditor			

Minimum System Requirements

Pentium 400MHz Processor / 128MB RAM / 10GB Disk Space /
24-bit Graphics Display Card SCSI Interface, 68 pin half pitch Dsub
connector with thumbscrews
Windows™ 95 / 98 / 2000 / NT4.0 service pack 3

* A0/E size @ 400 dpi total scan time in secs ignoring any host system limitations
or setup time. The scan rate is proportional across the full range of resolutions supported
by the scanner. However, the actual scan times will depend on the host system
performance. Contact your local supplier for advice on the optimum system
configuration for your application.

