

ANATECH

Eagle Mono Series

Large Format Digital Monochrome Scanners with Exceptional Accuracy & Resolution for GIS, Mapping, CAD and Graphic Arts Applications

ANAtch scanning technology is designed for highly demanding GIS and Cartographic applications. The Eagle Monochrome Series offers superior geometric accuracy, resolution and image quality.

The ANAtch Eagle 4225 & 2725 - leading edge monochrome scan technology and innovation:

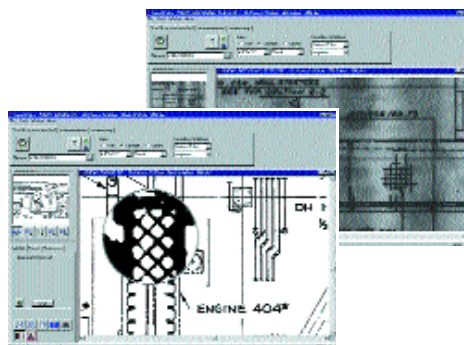
Resolution - Highest on the market with a true resolution of 1270 dpi and with capabilities of scanning up to 2540 dpi, the Eagle soars to meet the needs of the most demanding applications. Benefits include the capability of **resolving up to 18 line pairs per millimeter**, providing the ability to separate even the tightest contours. For Reprographics applications, the absence of moiré patterns is assured with the Eagle's ability to scan halftone line screened film dot for dot - simply and easily.

Geometric Accuracy - The tightest tolerance found on a Sheet Feed scanner today and boasting registration accuracy of ± 0.005 plus a digitising rounding error of ± 1 pixel, the Eagles are true GIS/Mapping scanners. The accurate scans produced allow images to be brought straight into a Geo referencing package without having to go through a post-scan editing exercise such as rubber sheeting or warping. This saves both time and money. The patented large diameter single roller design reduces the accordion affect commonly seen on smaller diameter multiple roller-designed scanners.

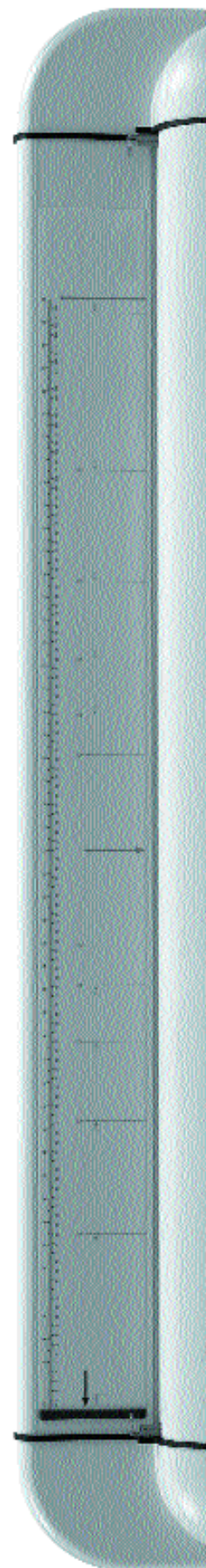
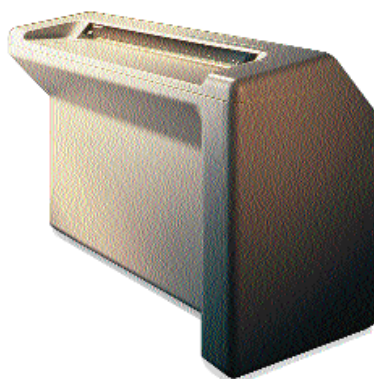
Productivity - No more sacrificing speed in search of quality thanks to the Eagle's fast scanning speeds, up to **1.39 in/s** at 400 dpi for the Eagle 2725. These scanners will not only produce the most accurate scans at the highest resolution - but also at truly productive 'right first time' quality. The Eagle's speed effectively eliminates the bottleneck at the scanning phase of the workflow experience with some previous generation scanners, allowing the user to focus on the data's final application.

Software Application Options - Predator is a professional raster editor designed specially for very large documents. It is provided as a standard option with the ANAtch Eagle scanners.

SIMPLE USER INTERFACE



- Full scanner set-up and control plus added workflow features.
- Thumbnail, zoom and loupe views. Post scan editing. Batch scanning with automatic file numbering.
- Document clean-up and archiving.
- TWAIN industry standard interface.



INDIVIDUAL
INDUSTRY
SOLUTIONS



ANATECH

Eagle Series

OUR BUSINESS IS YOUR IMAGE

ANatech Eagle 4225 / 2725 - Technical Specifications

Maximum scanning rates*	4225	2725
	1270 dpi 0.28 in/sec (7.11 mm/s) 1000 dpi 0.35 in/sec (8.89 mm/s) 800 dpi 0.44 in/sec (11.18 mm/s) 600 dpi 0.59 in/sec (14.99 mm/s) 400 dpi 0.88 in/sec (22.35 mm/s) 200 dpi 1.76 in/sec (44.70 mm/s)	1270 dpi 0.43 in/sec (10.92 mm/s) 1000 dpi 0.55 in/sec (13.97 mm/s) 800 dpi 0.69 in/sec (17.53 mm/s) 600 dpi 0.92 in/sec (23.37 mm/s) 400 dpi 1.39 in/sec (35.31 mm/s) 200 dpi 2.77 in/sec (70.38 mm/s)
Imaging technology	11 monochromatic CCD cameras each CCD 5000 pixels	7 monochromatic CCD cameras each CCD 5000 pixels
Active scan area	42" (107cm) x unlimited length	27" (68.6cm) x unlimited length
Maximum document width	44"	
Accuracy	+/-0.05% plus a digitising rounding error of +/- 1 pixel	
Paper skew	+/- 0.1%	
Resolution	2540 dpi maximum, 1270 dpi true optical resolution Variable from 50 to 2540 dpi in 1 dpi increments	
Image resolve	18 line pairs per mm @ 30%	
Media transport system	Patented single roller pinch feed, maximum media thickness 0.1" (2.54 mm) Automatic document load, position and size, manual document feed	
Document type	Opaque or transparent	
Data capture	8-bits per pixel	
Output data types	256 level greyscale, Black & White	
Output file formats	Multiple Industry Standard Raster File Formats – for Greyscale and Black & White data	
Illumination	Dual cold cathode tube	
Scanner interface	Fast SCSI 2, 50 way micro D type connector	
Dimensions (W x D x H)	58 x 26 x 40 in (147.3 x 66.0 x 101.6 cm)	
Weight	500 lbs, 230 Kg	
Operating environment	15 - 30°C, 59 - 86°F, 15 - 85% RH, non-condensing	
AC power requirement	International auto switching 90 VAC - 264 VAC 50/60 Hz 150 Watts	

Eagle 4225/2725 Scanners Include

ScanWorks, Predator, TWAIN, Micro SCSI card, cable and terminator, User documentation.

Minimum System Requirements

Pentium 400Mhz Processor,
256MB RAM
13GB Free disk space
Windows 95/98/2000 or NT4.0

*The scan rate is proportional across the full range of resolutions supported by the scanner. However, the actual scan times will depend on the host system performance. Contact your local supplier for advice on the optimum system requirements for your application.

